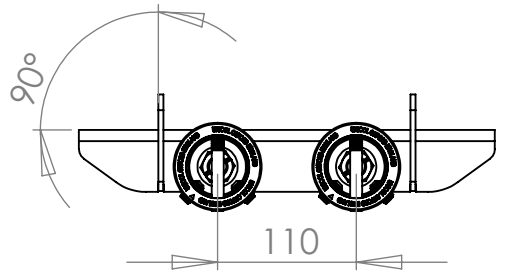
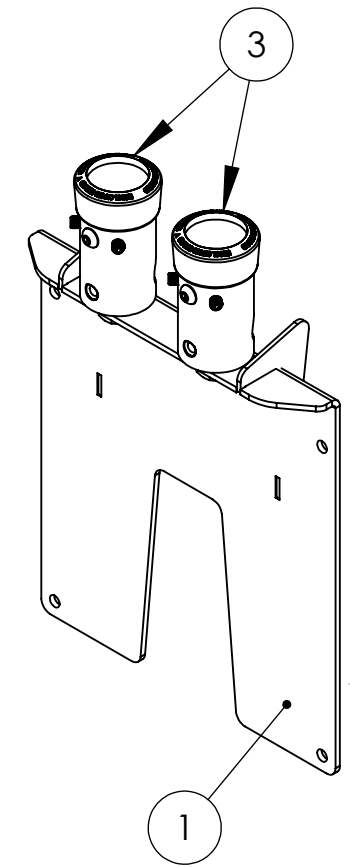
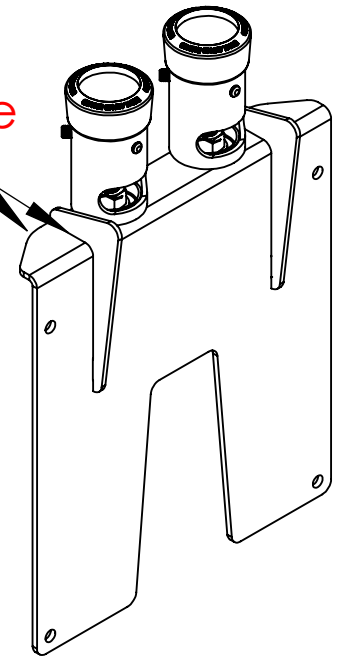


Weld each side of both ribs



BOM Table			
NO	Part Number	Description	QTY.
1	Par--20026547	PS12 300X300 Twin Socket Suspension Adapter	1
2	Par--20024305	Ps1 30X30 Support Rib	2
3	Ass--20000832	Ceiling suspension socket 16mm cap - 110mm long MSS1	2

Description		PS12 Twin Socket Suspension Adapter With 300 X 300 Fixing Centres	
UNLESS OTHERWISE SPECIFIED: DIMENSIONS ARE IN MILLIMETERS	Created By	Material:	See Below - Special Notes
	Created By Dennis Neale	Gauge:	
SURFACE FINISH: Powder Coated	Unicol Engineering Green Road Oxford OX3 8EU	DRW - REV <b>REV - A-005</b>	Part Number & Part Revision <b>Ass--20016428 REV - A-005</b>
WEIGHT: 6.46		Kg	Part Number & Part Revision

Part Number & Part Revision  
**Ass--20016428 REV - A-005**